

Luis Leal Pinho Morais^{a1}

Paola Pucci¹

Giovanni Azzone²

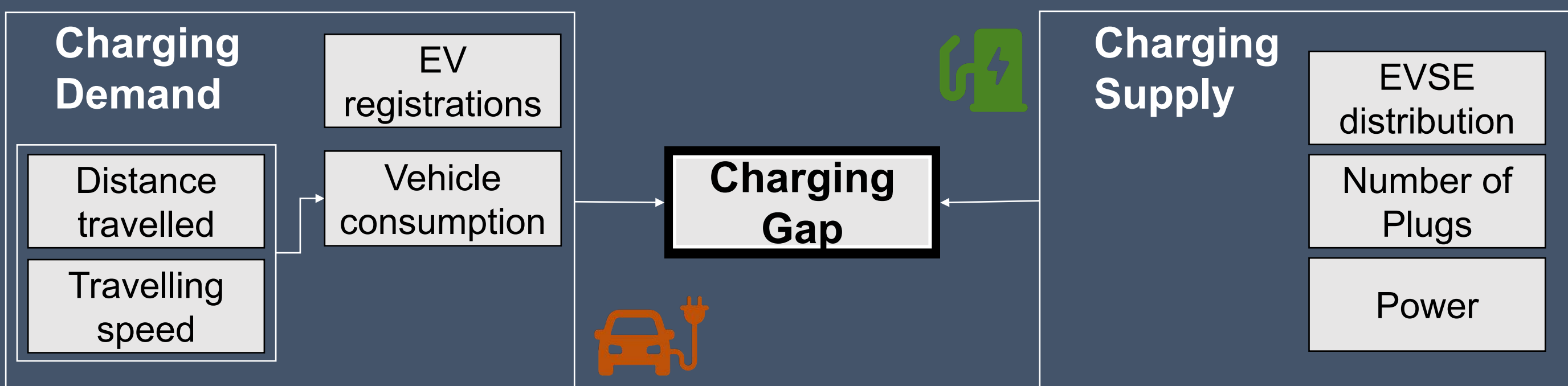
luisleal.morais@polimi.it;

¹Dastu, Politecnico di Milano;

²Dig, Politecnico di Milano;

The Challenge

Assess the sufficiency of a city's charging network by doing an energy balance.

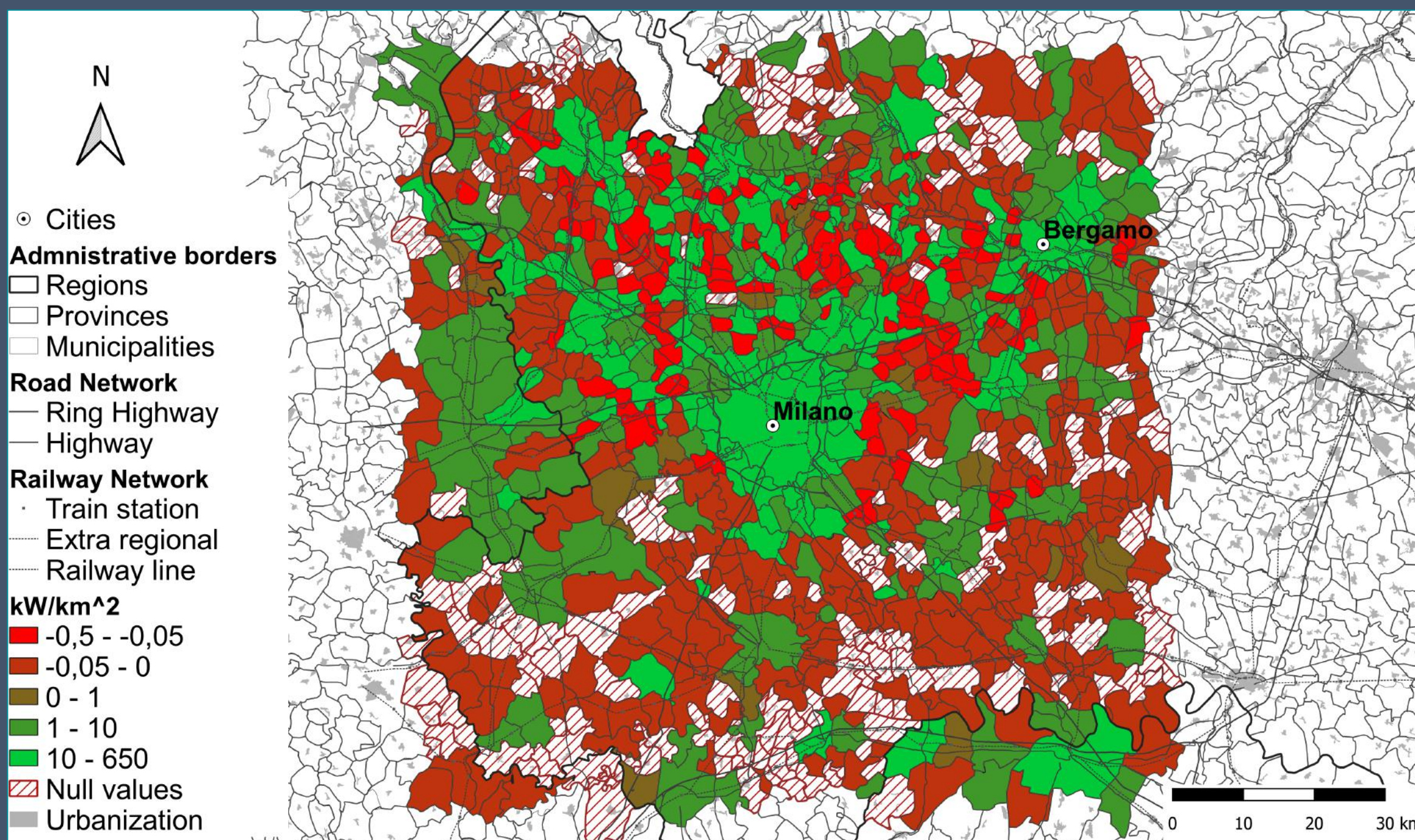


The Case-study

The Milan urban region was chosen due to the developed electric mobility.

The Results

Red areas indicate negative charging gap and green areas, positive values.



Conclusions

The supply is centralized in Milan, there is uncovered demand in part of the North and most of the South.